

MECHANICAL CYLINDERS AND KEYS

Cylinders, keys and
access control systems





About

ISEO is a multinational company that leads in the design and manufacture of both mechanical locking solutions and products for smart access management which cover the entire market demand, from residential buildings to large commercial and financial sites, hospitality and transport facilities, and critical infrastructures.

As a symbol of Made in Italy, it has been working since 1969 interpreting the needs of families, companies, designers, bringing the value of safety to a new dimension: the freedom to move, through Ultimate Access Technologies philosophy, at the service of companies and private individuals.

Feeling safe and secure means being truly free to move. That's why ISEO offers simple, fluid and modern solutions that ensure a total freedom of access, while maintaining full control. These include mechanical cylinders that are chosen worldwide for their reliability: most of them, indeed, are patented and therefore meet the highest security standards. ISEO cylinders respond innovatively to every market need, providing a wide range of prices and effectively adapting to different types of structure.

That's ISEO: a brand that offers the best mechanical security products which can be also combined with the most innovative connected solutions, to assure maximum flexibility together with high security performances.

ISEO protects your world

RESISTANCE
AGAINST
DRILLING



RESISTANCE
AGAINST
PULLING



RESISTANCE
AGAINST
MANIPULATION



PEACE OF MIND WITH THE HIGHEST LEVEL OF SECURITY

To ensure the highest level of security and peace of mind to every user, we first need to focus on the main techniques used in residential burglaries.

Some techniques leave evident damage as violent attacks are needed on the lock drilling.

Others are however more imperceptible and noiseless, and most of the time, leaving no marks on the lock. In this second type of attack, bumping and picking are the most common practices.

Bumping: a special modified key (bumping key) is inserted into the plug profile.

The skilled burglar applies blows on the key head to release the locking mechanism.

Picking: a chisel is inserted into the plug profile. The repeated picking action, managed by expert hands, can release the lock mechanism.

In all mentioned cases if you equip your door with a good mechanical cylinder and key, you can limit risks of inconveniency and you can really feel secure and free to move.

In addition, to increase door protection against forced entries, it is worthwhile to install a good protective rose, which represent a real barrier between the lock and outside.

PROTECTED KEY WHICH
AVOIDS UNAUTHORIZED
DUPLICATION



ONE UNIQUE KEY
having personalized
protected profile
and technical
patented solution.



**THE CORRESPONDING
PROPERTY CARD,**
which has to be presented at
specialized dealers' when asking
for a duplicate. Property Card
aims to identify key owner.

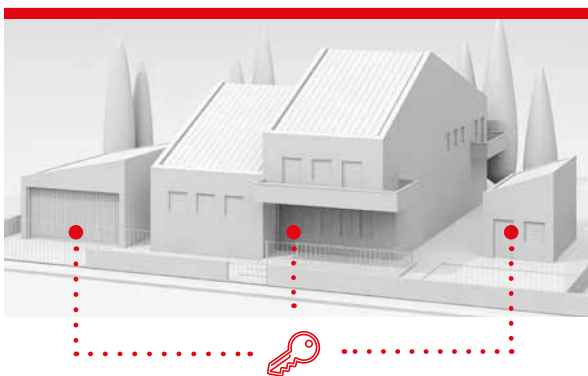
**SAFETY COMBINED WITH
FLEXIBILITY: INTEGRATION
WITH ELECTRONICS**

ISEO cylinders are the heart of the security of your doors and offer you a wide range of features to protect your home and belongings. From the basic cylinders to the top range for high security requirement, ISEO products work to allow **resistance to external attacks**, reliability and durability: beside, it is possible also to merge mechanical solutions together with the connected ones, to assure **maximum flexibility** and security to the user.



How to choose the right cylinder

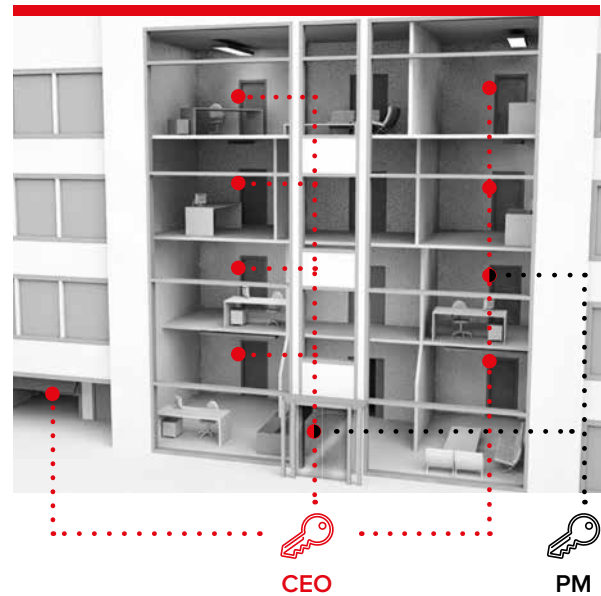
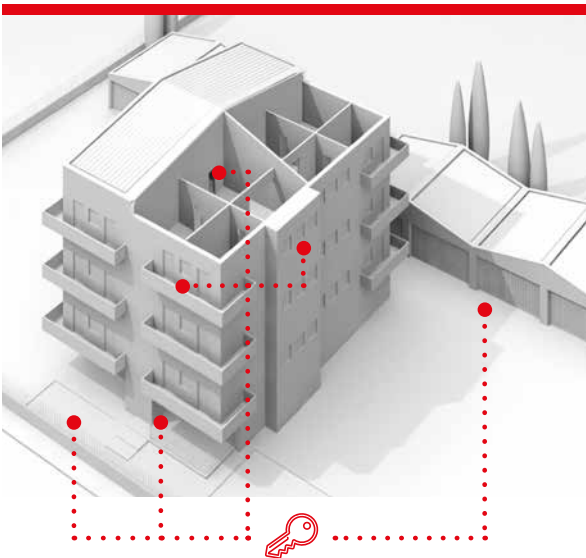
Choosing the right cylinder is fundamental to protect not only a building or a house but also to safeguard the peace of mind of the people who live or work in that building.



DO YOU LIVE IN A SINGLE HOUSE?

Using one unique key, you can open all accesses of your house, **having the right cylinder according to specific security needs**. For instance, entrance door requires maximum security and can be equipped with R90 cylinder, which has the highest security performances against brutal attack. Instead, for your boiler room, cellar or gate you may use R9 cylinder with medium security level.





DO YOU LIVE IN A MULTI APARTMENT HOUSE?

Using the same key, you can open the common entrances like main front door and gate, and your private doors, like apartment entrance door, garage and cellar. Each home owner cannot open other exclusive doors. Cylinders installed in private entrance doors and main front door may be of different security levels, based on the single needs of the specific room. High security cylinders such as R500 SPI or R90 are recommended for private entry door.

ARE YOU MANAGING A COMMERCIAL OR A PUBLIC BUILDING?

When managing public buildings (businesses, hospitals, schools, administrative offices, etc.), several factors gain primary importance such as access to emergency exit, protection against unauthorized duplication of keys, permissions management. At the same time, many people must be enabled to **share access without sacrificing security**. Flexibility of ISEO products perfectly meets these requirements as **hierarchical levels of authorization of access** can be easily managed. For example, in a company the Operations Manager will have access to all the doors of his department and to the warehouse but will not have access to the offices of Sales and Financial Departments, or to the CEO's Office. A cylinder with the highest level of security needs to be installed in specific accesses to protect goods or confidential information, while for the common doors even a medium security cylinder may be used.

Flexible, easy to use, secure and stable system

The LE60 modular system offers you the ideal solution to their needs in real time.

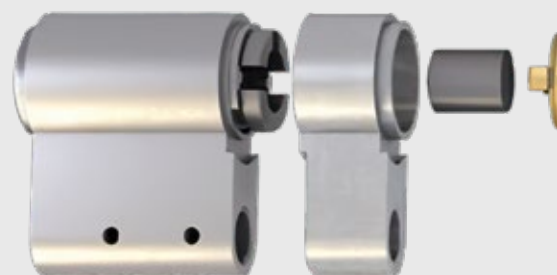
CSR and CSF systems are also available in modular configurations. LE60 system allows easier installations and reduces lead times.

Modular components of mechanical cylinders are also usable with F9000 mechatronic cylinder: offering the flexibility of an electronic solution without requiring additional specific components to be kept in stock.



SIMPLY AND ROBUST

The cylinder body extensions are designed to increase the mechanical strength of the cylinder, even when installing in very thick doors, with special reinforcements incorporated in the upper part of the component.



NO SPECIAL TOOLS

No special tools are needed for installation: the intelligent design of the components makes assembly and installation quick and easy. If needed, however, ISEO also offers a range of tools to make installation even quicker.



QUICK INSTALLATION

- LE60 system allows quick and simple installation regardless of the thickness of the door and the position of the lock.
- Modular system means that the entire installation can be carried out quickly and directly on site, without preliminary inspections and without knowing the measurements of the cylinder in advance.
- This reduces labour times and costs and gives the clients an immediate solution, using the right product that meets their precise needs in real time.



FEW COMPONENTS PERFECT SOLUTION

- With two bitted modules, provided complete with a set of keys and a property card, and tailorable to any size with just a few components, LE60 system is extremely simple to install.
- Modular components are the same for all systems, to offer immediately a cylinder with required level of security for the specific door and customer.

LE60 MODULAR SYSTEM



STRONGER

LE60 modular system features steel bars incorporated in the cylinder body, which reinforce the cylinder and increase resistance to forced entry by 40% compared with a conventional standard cylinder.

ONE BAR FOR ALL SIZES

The steel bar ensures that all the components of the system are securely and precisely mated. The stainless steel universal bar is pre-drilled and pre-cut, and can be adjusted to the measurement needed immediately and on site, without having to keep a selection of bars with specific dimensions in stock. A choice of 19 connecting bars with 4 holes caters for all 74 cylinder sizes in the catalogue.



ASSEMBLY KIT

ISEO offers an assembly kit consisting of a case containing the most commonly used sizes of the modular components and connecting bars. The case can also hold any other components the installer deems necessary, and includes space for assembly and installation tools.

CSR

RANGE

ENDLESS COMBINATION OF PRODUCTS AND PROFILES TO SUIT ANY SECURITY AND FLEXIBILITY REQUIREMENT.

CSR system is the ideal solution to manage complex master key systems and control the access to doors, thanks to a huge number of possible key bittings. Combined with patent and registered profiles, it also ensures protection against unauthorized duplication, thanks to a special technical solution (blocking pin) and a lifetime profile registration. Duplicated keys can only be obtained upon presentation of the Property Card.



R90



Key type	Reversible
Lengths of neck	12 mm
Patent	✓
Trademark	✓
Card	Property card
Material	Nickel silver
Tear resistance	✓
Bumping resistance	✓
Drilling resistance body & plug	✓
Sacrificial cut	⊗

Key Related Security ⑥ Attack Resistance ② Durability degree (min 100.000 cycles) ⑥



STANDARD

Compact and modular version:

DIN EN 1303: 2015-08 (11610|B10|C16|D)

SKG** | BSI* | VdS

CERTIFICATION



PRODUCT

The patented CSR R90 cylinder with protected duplicate keys is a reversible locking system which is part of the CSR product family. The R90 cylinder is available in different locking, keyed alike versions and masterkey systems.

APPLICATION

The large number of different profiles offered by this patented multi-profile system make it ideal for the access management of complex facilities. The authorized copy is obtained upon presentation of the Property Card. The R90 cylinder also boasts excellent resistance to external attack and drilling with specific devices incorporated in the cylinder body and barrel. The cylinder is also protected against tampering by specifically designed and certified pins and counter-pins, and against cylinder extraction by a steel bar incorporated in the cylinder body.

VERSION

Available in compact and modular design as:

- single profile cylinder
- double profile cylinder
- pre-arranged for knob
- knob cylinder

Available in compact design as:

- scandinavian type
- rim cylinder
- round cylinder
- lever round cylinder
- microswitch

TECHNICAL PRODUCT FEATURES

- Cylinder body and plug made of brass in the standard version matt nickel-plated
- Suitable for installation in fire doors
- Encryption pins in stainless steel
- Counterpins in brass
- Springs in stainless steel
- Euro-profile cylinder (norm)
- Locking cam made of sintered steel
- Locking cam in min. 30° position (according to DIN)
- In each plug there are 2 picking-resistant counterpins
- The drilling protection consists of hardened steel pin in the cylinder body and plug
- Each plug contains 2 profile pins which interrogate the key lance
- The drilling protection consists of a hardened steel pin in the cylinder body
- Hardened steel strengthening bar for increased snap and cylinder extraction resistance

FEATURES

R90 has 6 encryption pins in the inferior line, up to 4 pins in the lateral line and 5 pins in the superior line of which one is the patented blocking pin. From a length of 30-30 made of wear-resistant special brass, per locking side. A drilling protection as well as anti-pick protection is integrated in the profile cylinder. The surface of the cylinder body is matt nickel-plated or brass as standard. The keys are made of nickel silver.

Optionally selectable features:

- emergency and danger function
- free cam
- construction key

R9 Plus



Key type	Reversible
Lengths of neck	12 mm
Patent	⊗
Trademark	✓
Card	Property card
Material	Nickel silver
Tear resistance	✓
Bumping resistance	✓
Drilling resistance body & plug	✓
Sacrificial cut	⊗

Key Related Security Attack Resistance Durability degree (min 100.000 cycles)



STANDARD

Compact and modular version:
 DIN EN 1303: 2015-08 (16101B101C151D)
 SKG** | BSI*

CERTIFICATION



PRODUCT

The CSR R9 Plus cylinder is a reversible locking system which is part of the CSR product family. The R9 Plus cylinder is available in different locking, keyed alike versions and masterkey systems.

APPLICATION

A cylinder with independent cylinder profiles to restrict the use of each profile to specific geographic zones. With three rows for encryption, this cylinder is suitable for medium sized master key systems.

VERSION

Available in compact and modular design as:

- single profile cylinder
- double profile cylinder
- pre-arranged for knob
- knob cylinder

Available in compact design as:

- scandinavian type
- rim cylinder
- round cylinder
- lever round cylinder
- microswitch

TECHNICAL PRODUCT FEATURES

- Cylinder body and plug made of brass in the standard version matt nickel-plated
- Suitable for installation in fire doors
- Encryption pins in stainless steel
- Counterpins in brass
- Springs in stainless steel
- Euro-profile cylinder (norm)
- Locking cam made of sintered steel
- Locking cam in min. 30° position (according to DIN)
- In each plug there are 2 picking-resistant counterpins
- The drilling protection consists of hardened steel pin in the cylinder body and plug
- Each plug contains 2 profile pins which interrogate the key lance
- The drilling protection consists of a hardened steel pin in the cylinder body
- Hardened steel strengthening bar for increased snap and cylinder extraction resistance

FEATURES

R9 Plus has 6 encryption pins in the inferior line, up to 4 pins in the lateral line and 2 pins in the superior line from a length of 30-30 made of wear-resistant special brass, per locking side. A drilling protection as well as anti-pick protection is integrated in the profile cylinder.

The surface of the cylinder body is matt nickel-plated or brass as standard.

The keys are made of nickel silver.

Optionally selectable features:

- emergency and danger function
- free cam
- construction key

R9



Key type	Reversible
Lengths of neck	12 mm
Patent	⊗
Trademark	✓
Card	Property card
Material	Nickel silver
Tear resistance	✓
Bumping resistance	✓
Drilling resistance body & plug	✓
Sacrificial cut	⊗

Key Related Security ⑤ Attack Resistance ② Durability degree (min 100.000 cycles) ⑥



STANDARD

Compact and modular version:
 DIN EN 1303: 2015-08 (11610|B10|C15|D)
 SKG** | BSI*

CERTIFICATION



PRODUCT

The CSR R9 cylinder is a reversible locking system which is part of the CSR product family. The R9 cylinder is available in different locking, keyed alike versions and masterkey systems.

APPLICATION

The R9 with a large number of different mechanical profiles available, combines excellent potential for the creation of master key systems according to the security standards.

VERSION

Available in compact and modular design as:

- single profile cylinder
- double profile cylinder
- pre-arranged for knob
- knob cylinder

Available in compact design as:

- scandinavian type
- rim cylinder
- round cylinder
- lever round cylinder
- microswitch

TECHNICAL PRODUCT FEATURES

- Cylinder body and plug made of brass in the standard version matt nickel-plated
- Suitable for installation in fire doors
- Encryption pins in stainless steel
- Counterpins in brass
- Springs in stainless steel
- Euro-profile cylinder (norm)
- Locking cam made of sintered steel
- Locking cam in min. 30° position (according to DIN)
- In each plug there are 2 picking-resistant counterpins
- The drilling protection consists of hardened steel pin in the cylinder body and plug
- Each plug contains 2 profile pins which interrogate the key lance
- The drilling protection consists of a hardened steel pin in the cylinder body
- Hardened steel strengthening bar for increased snap and cylinder extraction resistance

FEATURES

R9 has 6 encryption pins in the inferior line and up to 4 pins in the lateral line from a length of 30-30 made of wear-resistant special brass, per locking side. A drilling protection as well as anti-pick protection is integrated in the profile cylinder. The surface of the cylinder body is matt nickel-plated or brass as standard. The keys are made of nickel silver.

Optionally selectable features:

- emergency and danger function
- free cam
- construction key

CSF

RANGE

FLEXIBLE TAILOR-MADE SECURITY SYSTEMS WITH SUPERIOR INTELLIGENCE

Endless combinations give rise to endless security. The CSF System combines the very best of mechanical security with the flexibility of electronics. It is the ideal solution for access control in public and private buildings as your system will be tailored to your present and future requirements, and your investment will always be protected.

Composed of mechanical and mechatronic cylinders, the CSF System has been designed to offer you endless combinations, flexibility and the utmost level of security.

CSF System is available as a multi-level product which can be combined to form a master key system with multiple profiles, registered and protected for life.



F90 SPI



Key type	Vertical
Lengths of neck	12 mm
Patent	✓
Trademark	✓
Card	Property card
Material	Nickel silver
Tear resistance	✓
Bumping resistance	⊗
Drilling resistance body & plug	✓
Sacrificial cut	⊗

Key Related Security ⑥ Attack Resistance ② Durability degree (min 100.000 cycles) ⑥



STANDARD

Compact and modular version:

DIN EN 1303: 2015-08 (11610|B10|C16|D)

SKG*** | BSI*

CERTIFICATION



PRODUCT

The F90 SPI cylinder with protected duplicate keys is a patented vertical locking system. The F90 SPI cylinder is also available in different locking and keyed alike versions.

APPLICATION

The F90 SPI with a large number of different mechanical profiles available, combines excellent potential for the creation of master key systems according to the security standards. The authorized copy is obtained upon presentation of the Property Card.

VERSION

Available in compact and modular design as:

- single profile cylinder
- double profile cylinder
- pre-arranged for knob
- knob cylinder

Available in compact design as:

- scandinavian type
- rim cylinder
- round cylinder
- lever round cylinder
- microswitch

TECHNICAL PRODUCT FEATURES

- Cylinder body and plug made of brass in the standard version matt nickel-plated
- Suitable for installation in fire doors
- Encryption pins in stainless steel
- Counterpins in brass
- Springs in stainless steel
- Euro-profile cylinder (norm)
- Locking cam made of sintered steel
- Locking cam in min. 30° position (according to DIN)
- In each plug there are 2 picking-resistant counterpins
- Each plug contains 2 profile pins which interrogate the key lance
- The drilling protection consists of a hardened steel pin in the cylinder body
- Hardened steel strengthening bar for increased snap and cylinder extraction resistance

FEATURES

F90 SPI has 6 encryption pins in the inferior coding row and up to 4 in the lateral coding row from a length of 30-30 made of wear-resistant special brass, per locking side. The patent SPI - valid until 2036 - and the trademark protection are registered at the Patent and Trademark Office. The protected lettering GERA is located as a cross-section in the key profile.

A anti-pick protection is integrated in the profile cylinder.

The surface of the cylinder body is matt nickel-plated or brass as standard. Three overlapping profile ribs of the plug increase the security of the profile cylinder against unauthorised openings (paracentric key profile).

The keys are made of nickel silver.

Optionally selectable features:

- emergency and danger function
- free cam
- anti-Amok function (slipping clutch for knob cylinder)
- conditional locking/classroom function
- special finishes: bright gold, Gera bronze (for modular profile cylinders)

Further systems of the CSF F90 series:

- F90 (standard version)

F9 SPI



Key type	Vertical
Lengths of neck	12 mm
Patent	✓
Trademark	✓
Card	Property card
Material	Nickel silver
Tear resistance	✓
Bumping resistance	✗
Drilling resistance body	✓
Sacrificial cut	✗

Key Related Security ⑥ Attack Resistance ① Durability degree (min 100.000 cycles) ⑥



STANDARD

Compact and modular version:
DIN EN 1303: 2015-08 (11610|B10|C16|O)

PRODUCT

The F9 SPI cylinder with protected duplicate keys is a patented vertical locking system. The F9 SPI cylinder is also available in different locking and keyed alike versions.

APPLICATION

The F9 SPI with a large number of different mechanical profiles available, combines excellent potential for the creation of master key systems according to the security standards. The authorized copy is obtained upon presentation of the Property Card.

VERSION

Available in compact and modular design as:

- single profile cylinder
- double profile cylinder
- pre-arranged for knob
- knob cylinder

Available in compact design as:

- scandinavian type
- rim cylinder
- round cylinder
- lever round cylinder
- microswitch

TECHNICAL PRODUCT FEATURES

- Cylinder body and plug made of brass in the standard version matt nickel-plated
- Suitable for installation in fire doors
- Encryption pins in stainless steel
- Counterpins in brass
- Springs in stainless steel
- Euro-profile cylinder (norm)
- Locking cam made of sintered steel
- Locking cam in min. 30° position (according to DIN)
- In each plug there are 2 picking-resistant counterpins
- Each plug contains 2 profile pins which interrogate the key lance
- The drilling protection consists of a hardened steel pin in the cylinder body
- Hardened steel strengthening bar for increased snap and cylinder extraction resistance

FEATURES

F9 SPI has 6 encryption pins from a length of 30-30 made of wear-resistant special brass, per locking side. The patent SPI - valid until 2036 - and the trademark protection are registered at the Patent and Trademark Office. The protected lettering GERA is located as a cross-section in the key profile. A anti-pick protection is integrated in the profile cylinder. The surface of the cylinder body is matt nickel-plated or brass as standard. Three overlapping profile ribs of the plug increase the the security of the profile cylinder against unauthorised openings (paracentric key profile). The keys are made of nickel silver.

Optionally selectable features:

- emergency and danger function
- free cam
- anti-Amok function (slipping clutch for knob cylinder)
- conditional locking/classroom function
- special finishes: bright gold, Gera bronze (for modular profile cylinders)

Further systems of the CSF F9 series:

- F9 (standard version)
- F9 SKG (with additional drilling protection)

F900



Key type	Vertical
Lengths of neck	12 mm
Patent	⊗
Trademark	✓
Card	Property card
Material	Nickel silver
Tear resistance	✓
Bumping resistance	⊗
Drilling resistance body & plug	✓
Sacrificial cut	⊗

Key Related Security ⑤ Attack Resistance ② Durability degree (min 100.000 cycles) ⑥



STANDARD

Compact and modular version:
DIN EN 1303: 2015-08 (11610|B10|C15|D)

PRODUCT

The F900 cylinder has a magnet in the encryption row, considered by the highest certification bodies as one of the most unmissable copy protections.

The F900 cylinder is a vertical locking system which is also available in different locking and keyed alike versions.

APPLICATION

The F900 with a large number of different mechanical profiles available, combines excellent potential for the creation of master key systems according to the security standards.

VERSION

Available in compact and modular design as:

- single profile cylinder
- double profile cylinder
- pre-arranged for knob
- knob cylinder

Available in compact design as:

- scandinavian type
- rim cylinder
- round cylinder
- lever round cylinder
- microswitch

TECHNICAL PRODUCT FEATURES

- Magnet in encryption coding row
- Cylinder body and plug made of brass in the standard version matt nickel-plated
- Suitable for installation in fire doors
- Encryption pins in stainless steel
- Counterpins in brass
- Springs in stainless steel
- Euro-profile cylinder (norm)
- Locking cam made of sintered steel
- Locking cam in min. 30° position (according to DIN)
- In each plug there are 2 picking-resistant counterpins
- Each plug contains 2 profile pins which interrogate the key lance
- The drilling protection consists of a hardened steel pin in the cylinder body
- Hardened steel strengthening bar for increased snap and cylinder extraction resistance

FEATURES

F900 has 6 pins in the inferior coding row, of which 5 are encryption pins, while in one chamber the magnet is collocated and up to 4 pins in the lateral coding row from a length of 30-30 made of wear-resistant special brass, per locking side. The trademark protection is registered at the Patent and Trademark Office. The protected lettering GERA is located as a cross-section in the key profile. An anti-pick protection is integrated in the profile cylinder. The surface of the cylinder body is matt nickel-plated or brass as standard. Three overlapping profile ribs of the plug increase the security of the profile cylinder against unauthorised openings (paracentric key profile). The keys are made of nickel silver.

Optionally selectable features:

- emergency and danger function
- free cam
- anti-Amok function (slipping clutch for knob cylinder)
- conditional locking/classroom function
- special finishes: Bright gold, Gera bronze (for modular profile cylinders)

F90



Key type	Vertical
Lengths of neck	12 mm
Patent	⊗
Trademark	✓
Card	Property card
Material	Nickel silver
Tear resistance	✓
Bumping resistance	⊗
Drilling resistance body & plug	✓
Sacrificial cut	⊗

Key Related Security ⑥ Attack Resistance ② Durability degree (min 100.000 cycles) ⑥



STANDARD

Compact and modular version:
 DIN EN 1303: 2015-08 (11610|B10|C16|D)
 SKG*** | BSI*

CERTIFICATION



PRODUCT

The F90 cylinder is a vertical locking system. The F90 cylinder is also available in different locking and keyed alike versions.

APPLICATION

The F90 with a large number of different mechanical profiles available, combines excellent potential for the creation of master key systems according to the security standards.

VERSION

Available in compact and modular design as:

- single profile cylinder
- double profile cylinder
- pre-arranged for knob
- knob cylinder

Available in compact design as:

- scandinavian type
- rim cylinder
- round cylinder
- lever round cylinder
- microswitch

TECHNICAL PRODUCT FEATURES

- Cylinder body and plug made of brass in the standard version matt nickel-plated
- Suitable for installation in fire doors
- Encryption pins in stainless steel
- Counterpins in brass
- Springs in stainless steel
- Euro-profile cylinder (norm)
- Locking cam made of sintered steel
- Locking cam in min. 30° position (according to DIN)
- In each plug there are 2 picking-resistant counterpins
- Each plug contains 2 profile pins which interrogate the key lance
- The drilling protection consists of a hardened steel pin in the cylinder body and plug
- Hardened steel strengthening bar for increased snap and cylinder extraction resistance

FEATURES

F90 has 6 encryption pins in the inferior coding row and up to 4 in the lateral coding row from a length of 30-30 made of wear-resistant special brass, per locking side. The trademark protection is registered at the Patent and Trademark Office. The protected lettering GERA is located as a cross-section in the key profile.

A anti-pick protection is integrated in the profile cylinder. The surface of the cylinder body is matt nickel-plated or brass as standard. Three overlapping profile ribs of the plug increase the the security of the profile cylinder against unauthorised openings (paracentric key profile). The keys are made of nickel silver.

Optionally selectable features:

- emergency and danger function
- free cam
- anti-Amok function (slipping clutch for knob cylinder)
- conditional locking/classroom function
- special finishes: Bright gold, Gera bronze (for modular profile cylinders)

Further systems of the F90 series:

- F90 SPI (with patented SPI pin)

F9



Key type	Vertical
Lengths of neck	12 mm
Patent	⊗
Trademark	✓
Card	Property card
Material	Nickel silver
Tear resistance	✓
Bumping resistance	⊗
Drilling resistance body	✓
Sacrificial cut	⊗

Key Related Security ⑥ Attack Resistance ① Durability degree (min 100.000 cycles) ⑥



STANDARD

Compact and modular version:
DIN EN 1303: 2015-08 (11610|B10|C16|I0)

PRODUCT

The F9 cylinder is a vertical locking system. The F9 cylinder is also available in different locking and keyed alike versions.

APPLICATION

The F9 with a large number of different mechanical profiles available, combines excellent potential for the creation of master key systems according to the security standards.

VERSION

Available in compact and modular design as:

- single profile cylinder
- double profile cylinder
- pre-arranged for knob
- knob cylinder

Available in compact design as:

- scandinavian type
- rim cylinder
- round cylinder
- lever round cylinder
- microswitch

TECHNICAL PRODUCT FEATURES

- Cylinder body and plug made of brass in the standard version matt nickel-plated
- Suitable for installation in fire doors
- Encryption pins in stainless steel
- Counterpins in brass
- Springs in stainless steel
- Euro-profile cylinder (norm)
- Locking cam made of sintered steel
- Locking cam in min. 30° position (according to DIN)
- In each plug there are 2 picking-resistant counterpins
- Each plug contains 2 profile pins which interrogate the key lance
- The drilling protection consists of a hardened steel pin in the cylinder body
- Hardened steel strengthening bar for increased snap and cylinder extraction resistance

FEATURES

F9 has 6 encryption pins from a length of 30-30 made of wear-resistant special brass, per locking side. The trademark protection is registered at the Patent and Trademark Office. The protected lettering GERA is located as a cross-section in the key profile. A anti-pick protection is integrated in the profile cylinder. The surface of the cylinder body is matt nickel-plated or brass as standard. Three overlapping profile ribs of the plug increase the the security of the profile cylinder against unauthorised openings (paracentric key profile). The keys are made of nickel silver. Optionally selectable features:

- emergency and danger function
 - free cam
 - anti-Amok function (slipping clutch for knob cylinder)
 - conditional locking/classroom function
 - special finishes: Bright gold, Gera bronze (for modular profile cylinders)
- Further systems of the CSF F9 series:
- F9 SPI (with patented SPI pin)
 - F9 SKG (with additional drilling protection)

Cylinders with reversible and vertical key type

The cylinder is the heart of security: it is the structural element whose design and manufacturing characteristics ensure effective closing performance. ISEO has more than 50 years of experience in producing them with the highest quality. This is why we can offer top of the market security, technological research and accuracy in design. ISEO, on top of CSR and CSF systems, offers a comprehensive range of mechanical cylinders to meet different security needs.



NEW

R ME



Key type	Reversible
Lengths of neck	18mm / 20mm
Patent	✓
Trademark	⊗
Card	Property card
Material	Nickel silver
Tear resistance	⊗
Bumping resistance	✓
Drilling resistance body & plug	✓
Sacrificial cut	⊗

Key Related Security Attack Resistance Durability degree (min 100.000 cycles)



STANDARD

Compact and modular version:
EN1303: 2015-08 (1I6I0IBI0IC16ID)
SKG ***

CERTIFICATION



PRODUCT

The R ME patented multi-profile locking system combines the highest safety standards with functionality and design features. The R ME is available in key different, key alike versions and suitable for Masterkey-systems.

APPLICATION

The patented R ME cylinder is available in both compact and modular version and therefore it represents an ideal solution also for armoured doors.

Thanks to the possibility of combination on three-lines encryption the R ME Multiprofile cylinder guarantees a very high permutation calculation and is suitable for multi-level master key systems.

VERSION

Available in compact and modular design as:

- single profile cylinder
- double profile cylinder
- pre-arranged for knob
- knob cylinder

Available in compact design as:

- scandinavian type
- rim cylinder
- round cylinder

TECHNICAL PRODUCT FEATURES

- Cylinder body and plug made of brass in the standard version matt nickel-plated
- Suitable for installation in fire doors
- Encryption pins in stainless steel
- Counterpins in brass
- Springs in stainless steel
- Euro-profile cylinder (norm)
- Locking cam made of sintered steel
- Locking cam in min. 30° position (according to DIN)
- In each plug there are 2 picking-resistant counterpins
- The drilling protection consists of hardened steel pin in the cylinder body and plug
- Patented mobile element in key-profile, interacting with special pins in the plug

FEATURES

R ME has 6 encryption pins in the inferior line, up to 4 pins in the lateral line and up to 5 pins in the superior line from a length of 30-30 made of wear-resistant special brass, per locking side. A drilling protection as well as anti-pick protection is integrated in the profile cylinder.

The surface of the cylinder body is matt nickel-plated or brass as standard.

The keys are made of nickel silver. The key is available with a co-printed head in black/red (20 mm key neck) or with key-caps in 5 different colours (18 mm key neck).

Optionally selectable features:

- emergency and danger function
- free cam
- construction key

NEW

R500 SPI



Key type	Reversible
Lengths of neck	18 mm/ 20 mm
Patent	✓
Trademark	⊗
Card	Property card
Material	Nickel silver
Tear resistance	⊗
Bumping resistance	✓
Drilling resistance body & plug	✓
Sacrificial cut	⊗

Key Related Security Attack Resistance Durability degree (min 100.000 cycles)



STANDARD

Compact version:
DIN EN 1303: 2015-08 (16|0|B|0|C|6|D)
SKG** | BSI*

Modular version:
DIN EN 1303: 2015-08 (16|0|B|0|C|6|D)
SKG*** | BSI*

CERTIFICATION



PRODUCT

The R500 SPI reversible key cylinder is a patented locking system which meets the highest safety standards required by both companies and privates. The R500 SPI is available in key different, key alike versions and suitable for Masterkey-systems.

APPLICATION

The patented R500 SPI reversible key cylinder is recommended for security and armoured doors.

VERSION

Available in compact and modular design as:

- single profile cylinder
- double profile cylinder
- pre-arranged for knob
- knob cylinder

Available in compact design as:

- scandinavian type
- rim cylinder
- round cylinder

TECHNICAL PRODUCT FEATURES

- Cylinder body and plug made of brass in the standard version matt nickel-plated
- Suitable for installation in fire doors
- Encryption pins in stainless steel
- Counterpins in brass
- Springs in stainless steel
- Euro-profile cylinder (norm)
- Locking cam made of sintered steel
- Locking cam in min. 30° position (according to DIN)
- In each plug there are 2 picking-resistant counterpins
- The drilling protection consists of hardened steel pin in the cylinder body and plug
- Patented SPI pin in key-profile, interacting with special pins in one chamber

FEATURES

R500 SPI has 6 encryption pins in the inferior line, up to 4 pins in the lateral line and up to 5 pins in the superior line from a length of 30-30 made of wear-resistant special brass, per locking side. A drilling protection as well as anti-pick protection is integrated in the profile cylinder.

The surface of the cylinder body is matt nickel-plated or brass as standard.

The keys are made of nickel silver. The key is available with a co-printed head in black/red (20 mm key neck) or with key-caps in 5 different colours (18 mm key neck).

Optionally selectable features:

- emergency and danger function
- free cam
- construction key

NEW

R700 S3



Key type	Reversible
Lengths of neck	16 mm
Patent	⊗
Trademark	⊗
Card	Code card
Material	Nickel plated brass
Tear resistance	✔
Bumping resistance	✔
Drilling resistance body & plug	✔
Sacrificial cut	✔

Key Related Security ⑥ Attack Resistance ② Durability degree (min 100.000 cycles) ⑥



STANDARD

Compact version:
 DIN EN 1303: 2015-08 (11610|B10|C16|D)
 BSI*** | Sold Secure Diamond | Secured by Design

CERTIFICATION



PRODUCT

The R700 S3 cylinder is specifically designed by ISEO for United Kingdom and it is suitable to manage the accesses of houses, residential buildings and small business: The reversible key system and its special design, is certified by some of the most important trade certification bodies in the United Kingdom. This cylinder is available in keyed different and keyed alike versions.

APPLICATION

R700 S3 thanks to its special design is suitable to manage the accesses of houses, residential buildings and small business. Interesting especially for the UKI market, which requires BSI*** as standard.

VERSION

Available in compact design as:

- double profile cylinder
- pre-arranged for knob
- thumbturn cylinder

TECHNICAL PRODUCT FEATURES

- Cylinder body and plug made of brass in the standard version matt nickel-plated
- Suitable for installation in fire doors
- Encryption pins in stainless steel
- Counterpins in brass
- Springs in stainless steel
- Euro-profile cylinder (norm)
- Locking cam made of sintered steel
- Locking cam in min. 30° position (according to DIN)
- In each plug there are 2 picking-resistant counterpins
- In each plug are present 2 pins, increasing the bumping resistance
- The drilling protection consists of a hardened steel pin in the cylinder body and plug
- Hardened steel strengthening bar for increased snap and cylinder extraction resistance
- Sacrificial cut
- The tungsten carbide cam assembly makes the central part of the cylinder safe
- Installed trap so to protect

FEATURES

The peculiarity of R700 S3 is made by the presence of sacrificial cuts on the body of the cylinder and by the components present inside of it.

In case of a manual attack (snapping), the cylinder will break at the intended point thanks to the sacrificial cuts.

Inside the cylinder there is also a trap, which is triggered in case of manual attack: in addition, the components particularly suitable for the required safety, make the central part of the cylinder safe. Thanks to this solution, the cylinder is still operable and functional from the inside even after the attack described above, which makes the door inaccessible from the outside!

The surface of the cylinder body is matt nickel-plated, polished nickel or brass as standard.

The keys are made of nickel coated brass.

NEW

R700



Key type	Reversible
Lengths of neck	16 mm
Patent	⊗
Trademark	⊗
Card	Code card
Material	Nickel plated brass
Tear resistance	⊗
Bumping resistance	✓
Drilling resistance body & plug	✓
Sacrificial cut	⊗

Key Related Security ⑥ Attack Resistance ② Durability degree (min 100.000 cycles) ⑥



CODE CARD



ANTI-PICK



ANTI-BUMP



ANTI-SCREW

STANDARD

Compact and modular version:
DIN EN 1303: 2015-08 (1610|B10|C16|D)
SKG under certification

CERTIFICATION



PRODUCT

The R700 cylinder with free duplication keys is a reversible key system, offering a superior level of security. Various profiles are available. The R700 is available in key different and key alike versions.

APPLICATION

R700 thanks to its high level of security is appropriated to protect the entrances of your home and doors of medium sized commercial complexes, schools and shops.

VERSION

Available in compact and modular design as:

- single profile cylinder
- double profile cylinder
- pre-arranged for knob
- knob cylinder

Available in compact design as:

- scandinavian type
- rim cylinder
- round cylinder

TECHNICAL PRODUCT FEATURES

- Cylinder body and plug made of brass in the standard version matt nickel-plated
- Suitable for installation in fire doors
- Encryption pins in stainless steel
- Counterpins in brass
- Springs in stainless steel
- Euro-profile cylinder (norm)
- Locking cam made of sintered steel
- Locking cam in min. 30° position (according to DIN)
- In each plug there are 2 picking-resistant counterpins
- The drilling protection consists of hardened steel pin in the cylinder body and plug

FEATURES

R700 has 6 encryption pins in the inferior line, up to 4 pins in the lateral line and up to 5 pins in the superior line from a length of 30-30 made of wear-resistant special brass, per locking side. A drilling protection as well as anti-pick protection is integrated in the profile cylinder.

The surface of the cylinder body is matt nickel-plated or brass as standard.

The keys are made of nickel coated brass. Ergonomic plastic caps in opal green are included.

Optionally selectable features:

- emergency and danger function
- free cam
- construction key

R6 SKG



Key type	Reversible
Lengths of neck	16 mm
Patent	⊗
Trademark	⊗
Card	Code card delivered just with the 5 key version
Material	Nickel plated brass
Tear resistance	✓
Bumping resistance	⊗
Drilling resistance body & plug	✓
Sacrificial cut	⊗

Key Related Security **5** Attack Resistance **D** Durability degree (min 100.000 cycles) **5**



CODE CARD



MASTER KEY SYSTEM



ANTI-PICK



ANTI-SCREW

STANDARD

Compact version:
DIN EN 1303: 2015-08 (116101B101C151D)
SKG** | EN1627 RC3 | IMP C

Modular version:
DIN EN 1303: 2015-08 (116101B101C151D)
SKG**

CERTIFICATION



PRODUCT

The R6 SKG cylinder with free duplication keys is an entry-level reversible key system with high drilling-resistance. The R6 SKG is available in key different and key alike versions.

APPLICATION

R6 SKG is suitable for securing the entrances of your home or of a commercial facility.

VERSION

Available in compact and modular design as:

- single profile cylinder
- double profile cylinder
- pre-arranged for knob
- knob cylinder

Available in compact design as:

- rim cylinder
- round cylinder

TECHNICAL PRODUCT FEATURES

- Cylinder body and plug made of brass in the standard version matt nickel-plated
- Suitable for installation in fire doors
- Encryption pins in stainless steel
- Counterpins in brass
- Springs in stainless steel
- Euro-profile cylinder (norm)
- Locking cam made of sintered steel
- Locking cam in min. 30° position (according to DIN)
- In each plug there are 2 picking-resistant counterpins
- The drilling protection consists of hardened steel pin in the cylinder body and plug
- Hardened steel strengthening bar for increased snap and cylinder extraction resistance

FEATURES

R6 SKG has 6 encryption pins from a length of 30-30 made of wear-resistant special brass, per locking side. A drilling protection as well as anti-pick protection is integrated in the profile cylinder and plug.

The surface of the cylinder body is matt nickel-plated or brass as standard.

The keys are made of nickel coated brass.

Optionally selectable features:

- emergency and danger function

Further systems of the R6 series:

- R6 standard
- R6 SPI (with patented SPI pin)
- R6 Plus (construction key)
- R6 MC (with magnet)

NEW

R6 SPI



Key type	Reversible
Lengths of neck	16 mm
Patent	✓
Trademark	⊗
Card	Property card
Material	Nickel plated brass
Tear resistance	⊗
Bumping resistance	⊗
Drilling resistance body	✓
Sacrificial cut	⊗

Key Related Security ⑤ Attack Resistance ⑩ Durability degree (min 100.000 cycles) ⑥



PROPERTY CARD



ANTI-PICK

STANDARD

Compact and modular version:

DIN EN 1303: 2015-08 (1610|B10|C15|O)

PRODUCT

R6 SPI reversible key cylinder protected by patent is designed to manage corporate and private access with simplicity and security. The R6 SPI is available in key different, key alike versions and feasible for small Masterkey systems.

APPLICATION

R6 SPI is suitable for installation on almost any door on the market.

VERSION

Available in compact and modular design as:

- single profile cylinder
- double profile cylinder
- pre-arranged for knob
- knob cylinder

Available in compact design as:

- scandinavian type
- rim cylinder
- round cylinder

TECHNICAL PRODUCT FEATURES

- Cylinder body and plug made of brass in the standard version matt nickel-plated
- Suitable for installation in fire doors
- Encryption pins in stainless steel
- Counterpins in brass
- Springs in stainless steel
- Euro-profile cylinder (norm)
- Locking cam made of sintered steel
- Locking cam in min. 30° position (according to DIN)
- In each plug there are 2 picking-resistant counterpins
- The drilling protection consists of a hardened steel pin in the cylinder body

FEATURES

R6 SPI has 6 pins of which one pin is working as anti-duplication device from a length of 30-30 made of wear-resistant special brass, per locking side. The patent SPI - valid until 2036 - is registered at the Patent and Trademark Office.

A drilling protection as well as anti-pick protection is integrated in the profile cylinder.

The surface of the cylinder body is matt nickel-plated or brass as standard.

The keys are made of nickel coated brass.

Optionally selectable features:

- emergency and danger function
- free cam




Further systems of the R6 series:

- R6 (standard)
- R6 SKG (with additional drilling protection)
- R6 Plus (construction key)
- R6 MC (with magnet)

R6 Plus



Key type	Reversible
Lengths of neck	16 mm
Patent	⊗
Trademark	⊗
Card	Code card
Material	Nickel plated brass
Tear resistance	⊗
Bumping resistance	⊗
Drilling resistance body & plug	⊙
Sacrificial cut	⊗

Key Related Security  Attack Resistance  Durability degree (min 100.000 cycles) 



CODE CARD



ANTI-PICK



ANTI-DRILL

STANDARD

Compact and modular version:

DIN EN 1303: 2015-08 (16101B101C151C)

PRODUCT

The R6 Plus cylinder with free duplication keys is an entry-level reversible key system. The R6 is available in key different and key alike versions.

APPLICATION

R6 Plus is suitable for securing the secondary entrances of your home or of a commercial facility. The R6 plus cylinder comes with construction key which works only during the time when the installer does the assembly and testing of the door. The Code Card ensures the quality of any duplicates made, while the plastic cap for the head of the key further improves ease of use.

VERSION

Available in compact and modular design as:

- single profile cylinder
- double profile cylinder
- pre-arranged for knob
- knob cylinder

Available in compact design as:

- rim cylinder
- round cylinder

TECHNICAL PRODUCT FEATURES

- Cylinder body and plug made of brass in the standard version matt nickel-plated
- Suitable for installation in fire doors
- Encryption pins in stainless steel
- Counterpins in brass
- Springs in stainless steel
- Euro-profile cylinder (norm)
- Locking cam made of sintered steel
- Locking cam in min. 30° position (according to DIN)
- In each plug there are 2 picking-resistant counterpins
- The drilling protection consists of a hardened steel pin in the cylinder body and plug

FEATURES

R6 Plus has 6 encryption pins from a length of 30-30 made of wear-resistant special brass, per locking side.

A drilling protection as well as anti-pick protection is integrated in the profile cylinder and plug.

The surface of the cylinder body is matt nickel-plated or brass as standard.

The keys are made of nickel coated brass.

Optionally selectable features:

- emergency and danger function

Further systems of the R6 series:

- R6 SPI (with patented SPI pin)
- R6 SKG (with additional drilling protection)
- R6 Plus (construction key)
- R6 MC (with magnet)

R6



Key type	Reversible
Lengths of neck	16 mm
Patent	⊗
Trademark	⊗
Card	Code card included in 5-key version
Material	Nickel plated brass
Tear resistance	⊗
Bumping resistance	⊗
Drilling resistance body	✓
Sacrificial cut	⊗

Key Related Security ⑤ Attack Resistance ⑩ Durability degree (min 100.000 cycles) ⑥



CODE CARD



ANTI-PICK

STANDARD

Compact and modular version:

DIN EN 1303: 2015-08 (11610|B10|C15|I0)

PRODUCT

The R6 cylinder with free duplication keys is an entry-level reversible key system. The R6 is available in key different and key alike versions.

APPLICATION

R6 is suitable for securing the secondary entrances of your home or of a commercial facility.

VERSION

Available in compact and modular design as:

- single profile cylinder
- double profile cylinder
- pre-arranged for knob
- knob cylinder

Available in compact design as:

- rim cylinder
- round cylinder

TECHNICAL PRODUCT FEATURES

- Cylinder body and plug made of brass in the standard version matt nickel-plated
- Suitable for installation in fire doors
- Encryption pins in stainless steel
- Counterpins in brass
- Springs in stainless steel
- Euro-profile cylinder (norm)
- Locking cam made of sintered steel
- Locking cam in min. 30° position (according to DIN)
- In each plug there are 2 picking-resistant counterpins
- The drilling protection consists of a hardened steel pin in the cylinder body

FEATURES

R6 has 6 encryption pins from a length of 30-30 made of wear-resistant special brass, per locking side. A drilling protection as well as anti-pick protection is integrated in the profile cylinder. The surface of the cylinder body is matt nickel-plated or brass as standard. The keys are made of nickel coated brass.

Optionally selectable features:

- emergency and danger function

Further systems of the R6 series:

- R6 SPI (with patented SPI pin)
- R6 SKG (with additional drilling protection)
- R6 Plus (construction key)
- R6 MC (with magnet)

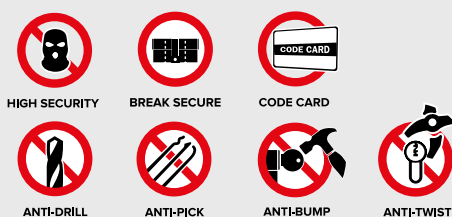
NEW

F6 Extra S3



Key type	Vertical
Lengths of neck	11 mm
Patent	⊗
Trademark	⊗
Card	Code card
Material	Nickel plated brass
Tear resistance	✔
Bumping resistance	✔
Drilling resistance body & plug	✔
Sacrificial cut	✔

Key Related Security ⑤ Attack Resistance ② Durability degree (min 100.000 cycles) ⑥



STANDARD

Compact version:
 DIN EN 1303: 2015-08 (116|0|B|0|C|15|D)
 BSI*** | Sold Secure Diamond | Secured by Design

CERTIFICATION



PRODUCT

The F6 Extra S3 cylinder is specifically designed by ISEO for United Kingdom and it is suitable to manage the accesses of houses, residential buildings and small business. The vertical key system with its special design is certified by some of the most important trade certification bodies in the United Kingdom. This cylinder is available in keyed different and keyed alike versions.

APPLICATION

F6 Extra S3 thanks to its special design is suitable to manage the accesses of houses, residential buildings and small business. Interesting especially for the UKI market, which requires BSI*** as standard, just as SKG and BSI Kitemark, which are symbol of quality and security.

VERSION

Available in compact design as:

- double profile cylinder
- pre-arranged for knob
- thumbturn cylinder

TECHNICAL PRODUCT FEATURES

- Cylinder body and plug made of brass in the standard version matt nickel-plated
- Suitable for installation in fire doors
- Encryption pins in stainless steel
- Counterpins in brass
- Springs in stainless steel
- Euro-profile cylinder (norm)
- Locking cam made of sintered steel
- Locking cam in min. 30° position (according to DIN)
- In each plug there are 2 picking-resistant counterpins
- In each plug are present 2 pins, increasing the bumping resistance
- The drilling protection consists of a hardened steel pin in the cylinder body and plug
- Hardened steel strengthening bar for increased snap and cylinder extraction resistance
- Sacrificial cut
- The tungsten carbide cam assembly makes the central part of the cylinder safe
- Installed trap so to protect

FEATURES

F6 Extra S3 is made by the presence of sacrificial cuts on the body of the cylinder and by the components present inside of it. In case of a manual attack (snapping), the cylinder will break at the intended point thanks to the sacrificial cuts. Inside the cylinder there is also a trap, which is triggered in case of manual attack: in addition, the components particularly suitable for the required safety, make the central part of the cylinder safe. Thanks to this solution, the cylinder is still operable and functional from the inside even after the attack, which makes the door inaccessible from the outside!

The surface of the cylinder body is matt nickel-plated, polished nickel or brass as standard. Three overlapping profile ribs of the plug increase the the security of the profile cylinder against unauthorised openings (paracentric key profile). The keys are made of nickel coated brass.

Further systems of the F6 series:

- F6 (basic version)
- F6 Extra (with additional drilling protection)
- F6 Extra S (with additional drilling protection, sacrificial cut and pull-resistant bar)

F6 Extra S



Key type	Vertical
Lengths of neck	11 mm
Patent	⊗
Trademark	⊗
Card	⊗
Material	Nickel plated brass
Tear resistance	✔
Bumping resistance	✔
Drilling resistance body & plug	✔
Sacrificial cut	✔

Key Related Security ⑤ Attack Resistance ⑩ Durability degree (min 100.000 cycles) ⑥



ANTI-DRILL



ANTI-PICK



ANTI-BUMP



ANTI-TWIST



ANTI-BREAK BAR

STANDARD

Compact version:

DIN EN 1303: 2015-08 (I16I0IBI0ICI5I0)

SKG*** | BSI* | EN1627 RC3 | IMP C

CERTIFICATION



PRODUCT

The F6 Extra S cylinder with free duplication keys is a vertical key system with high attack resistance. The F6 Extra S is available in keyed different and keyed alike versions.

APPLICATION

F6 Extra S is a cylinder with certified superior levels of security featuring a pre-cut solution for greater pull resistance, excellent for the access control of residential buildings and medium sized commercial installations.

F6 Extra S corresponds to some of the highest security standards, certified by international organisations: SKG certification is a guarantee of superior attack resistance and protection, while the BSI Kitemark is one of the world's most respected and reliable forms of certification, and a symbol of quality and security.

VERSION

Available in compact and modular design as:

- single profile cylinder
- double profile cylinder
- pre-arranged for knob
- knob cylinder

TECHNICAL PRODUCT FEATURES

- Cylinder body and plug made of brass in the standard version matt nickel-plated
- Suitable for installation in fire doors
- Encryption pins in stainless steel
- Counterpins in brass
- Springs in stainless steel
- Euro-profile cylinder (norm)
- Locking cam made of sintered steel
- Locking cam in min. 30° position (according to DIN)
- In each plug there are 2 picking-resistant counterpins
- In each plug are present 2 pins, increasing the bumping resistance
- The drilling protection consists of a hardened steel pin in the cylinder body and plug
- Hardened steel strengthening bar for increased snap and cylinder extraction resistance
- Sacrificial cut

FEATURES

F6 Extra S has 6 encryption pins from a length of 30-30 made of wear-resistant special brass, per locking side.

The cylinder is equipped with drill-resistant devices collocated in the cylinder body and plug, anti-pick and anti-bump protection protection, just as protection against pulling.

The surface of the cylinder body is matt nickel-plated or brass as standard.

Three overlapping profile ribs of the plug increase the security of the profile cylinder against unauthorised openings (paracentric key profile). The keys are made of nickel coated brass.

Optionally selectable features:

- emergency and danger function

Further systems of the F6 series:

- F6 (basic version)

- F6 Extra (with additional drilling protection)

- F6 Extra S3 (with BSI*** certification)

F6 Extra



Key type	Vertical
Lengths of neck	11 mm
Patent	⊗
Trademark	⊗
Card	⊗
Material	Nickel plated brass
Tear resistance	⊗
Bumping resistance	✓
Drilling resistance body & plug	✓
Sacrificial cut	⊗

Key Related Security Attack Resistance Durability degree (min 100.000 cycles)



ANTI-BUMP



ANTI-PICK



ANTI-DRILL

STANDARD

Compact version:
DIN EN 1303: 2015-08 (11610|B10|C16|D)
SKG** | BSI* | IMP C

Modular version:
DIN EN 1303: 2015-08 (11610|B10|C16|D)
SKG** | BSI*

CERTIFICATION



PRODUCT

The F6 Extra cylinder with free duplication keys is an vertical key system with attack resistance. The F6 Extra is available in keyed different and keyed alike versions.

APPLICATION

A cylinder with superior levels of security for the access control of residential buildings and medium sized commercial installations. F6 Extra is certified by international organisations just as SKG and BSI Kitemark, which are symbol of quality and security.

VERSION

Available in compact and modular design as:

- single profile cylinder
- double profile cylinder
- pre-arranged for knob
- knob cylinder

TECHNICAL PRODUCT FEATURES

- Cylinder body and plug made of brass in the standard version matt nickel-plated
- suitable for installation in fire doors
- Encryption pins in stainless steel
- Counterpins in brass
- Springs in stainless steel
- Euro-profile cylinder (norm)
- Locking cam made of sintered steel
- Locking cam in min. 30° position (according to DIN)
- In each plug there are 2 picking-resistant counterpins
- In each plug are present 2 pins, increasing the bumping resistance
- The drilling protection consists of a hardened steel pin in the cylinder body and plug

FEATURES

F6 Extra has 6 encryption pins from a length of 30-30 made of wear-resistant special brass, per locking side. The cylinder is equipped with drill-resistant devices collocated in the cylinder body and plug and anti-pick protection. The surface of the cylinder body is matt nickel-plated or brass as standard.

Three overlapping profile ribs of the plug increase the the security of the profile cylinder against unauthorised openings (paracentric key profile). The keys are made of nickel coated brass.

Optionally selectable features:

- emergency and danger function

Further systems of the F6 series:

- F6 (basic version)
- F6 Extra S (with additional drilling protection, sacrificial cut and pull-resistant bar)
- F6 Extra S3 (with BSI*** certification)

F6



Key type	Vertical
Lengths of neck	11 mm
Patent	⊗
Trademark	⊗
Card	⊗
Material	Nickel plated brass
Tear resistance	⊗
Bumping resistance	⊗
Drilling resistance body	⊙
Sacrificial cut	⊗

Key Related Security Attack Resistance Durability degree (min 100.000 cycles)



MASTER KEY SYSTEM



ANTI-PICK

STANDARD

Compact and modular version:

DIN EN 1303: 2015-08 (11610|B10|C16|O)

PRODUCT

The F6 cylinder with free duplication keys is an entry-level vertical key system. The F6 is available in keyed different, keyed alike versions and for Masterkey systems.

APPLICATION

F6 is suitable for securing the secondary entrances of your home or of a commercial facility. Furthermore small-medium masterkey systems can be created.

VERSION

Available in compact and modular design as:

- single profile cylinder
- double profile cylinder
- pre-arranged for knob
- knob cylinder

Available in compact design as:

- rim cylinder
- round cylinder

TECHNICAL PRODUCT FEATURES

- Cylinder body and plug made of brass in the standard version matt nickel-plated
- Suitable for installation in fire doors
- Encryption pins in stainless steel
- Counterpins in brass
- Springs in stainless steel
- Euro-profile cylinder (norm)
- Locking cam made of sintered steel
- Locking cam in min. 30° position (according to DIN)
- In each plug there are 2 picking-resistant counterpins
- The drilling protection consists of a hardened steel pin in the cylinder body

FEATURES

F6 has 6 encryption pins from a length of 30-30 made of wear-resistant special brass, per locking side.

A anti-pick protection is integrated in the profile cylinder.

The surface of the cylinder body is matt nickel-plated or brass as standard.

Three overlapping profile ribs of the plug increase the the security of the profile cylinder against unauthorised openings (paracentric key profile). The keys are made of nickel coated brass.

Optionally selectable features:

- emergency and danger function

Further systems of the F6 series:

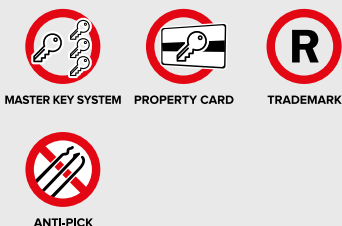
- F6 Extra (with additional drilling protection)
- F6 Extra S (with additional drilling protection, sacrificial cut and pull-resistant bar)
- F6 Extra S3 (with BSI*** certification)

F7 Multi



Key type	Vertical
Lengths of neck	11 mm
Patent	⊗
Trademark	⊙
Card	Property card
Material	Nickel plated brass
Tear resistance	⊗
Bumping resistance	⊗
Drilling resistance body	⊙
Sacrificial cut	⊗

Key Related Security Attack Resistance Durability degree (min 100.000 cycles)



STANDARD

Compact version:
DIN EN 1303: 2015-08 (11610|B10|C16|0)

PRODUCT

The F7 Multi cylinder is an entry-level vertical key system. The F7 Multi is available in keyed different, keyed alike versions and can be used primarily for medium to large master key systems, which are accessible to everyone.

APPLICATION

The F7 Multi with a large number of different mechanical profiles available, combines excellent potential for the creation of master key systems according to the security standards.

VERSION

Available in compact and modular design as:

- single profile cylinder
- double profile cylinder
- pre-arranged for knob
- knob cylinder

TECHNICAL PRODUCT FEATURES

- Cylinder body and plug made of brass in the standard version matt nickel-plated
- Suitable for installation in fire doors
- Encryption pins in stainless steel
- Counterpins in brass
- Springs in stainless steel
- Euro-profile cylinder (norm)
- Locking cam made of sintered steel
- Locking cam in min. 30° position (according to DIN)
- In each plug there are 2 picking-resistant counterpins
- The drilling protection consists of a hardened steel pin in the cylinder body

FEATURES

F7 Multi has 6 encryption pins from a length of 30-30 made of wear-resistant special brass, per locking side.

The trademark protection is registered at the Patent and Trademark Office. The protected lettering TCR is located as a cross-section in the key profile.

A anti-pick protection is integrated in the profile cylinder.

The surface of the cylinder body is matt nickel-plated or brass as standard.

Two overlapping profile ribs of the plug increase the the security of the profile cylinder against unauthorised openings (paracentric key profile). The keys are made of nickel coated brass.

Optionally selectable features:

- emergency and danger function

F5



Key type	Vertical
Lengths of neck	5 mm
Patent	⊗
Trademark	⊗
Card	⊗
Material	Nickel plated brass
Tear resistance	⊗
Bumping resistance	⊗
Drilling resistance body & plug	⊗
Sacrificial cut	⊗

Key Related Security ④ Attack Resistance ⑤ Durability degree (min 100.000 cycles) ⑥



MASTER KEY SYSTEM



ANTI-PICK

STANDARD

Compact version:
Declaration of conformity
EN 1303: 2015-08 (1|6|0|B|0|C|4|0)

PRODUCT

The traditional F5 cylinder with free duplication keys is an entry-level vertical key system. The F5 is available in key different, key alike versions and for Masterkey systems.

APPLICATION

F5 is suitable for securing the secondary entrances of your home or of a commercial facility.

VERSION

Available in compact and modular design as:

- single profile cylinder
- double profile cylinder
- pre-arranged for knob
- knob cylinder
- rim cylinder
- round cylinder

TECHNICAL PRODUCT FEATURES

- Cylinder body and plug made of brass in the standard version matt nickel-plated
- Suitable for installation in fire doors
- Encryption pins in brass
- Counterpins in brass
- Springs in stainless steel
- Euro-profile cylinder (norm)
- Locking cam made of sintered steel
- Locking cam in min. 30° position (according to DIN)
- In each plug there are 2 picking-resistant counterpins

FEATURES

F5 has 5 encryption pins from a length of 30-30 made of wear-resistant special brass, per locking side.

A anti-pick protection is integrated in the profile cylinder.

The surface of the cylinder body is matt nickel-plated or brass as standard.

Three overlapping profile ribs of the plug increase the security of the profile cylinder against unauthorised openings (paracentric key profile). The keys are made of nickel coated brass.

Optionally selectable features:

- emergency and danger function



ISEO Mechanical Cylinders give you peace of mind



ISEO offers comprehensive services, from preliminary analysis to detailed planning of the locking systems, to realize a tailor-made solution for all your security needs.



ISEO offers a large range of special cylinders for a wide variety of applications.



Cylinders example for special applications



NICKEL PLATED ROUND
THREADED CYLINDER



CYLINDER
WITH MICROSWITCH



SEPARATE
EXTERNAL CYLINDER



INTERNAL AND EXTERNAL
FIXED CYLINDER



INTERNAL AND EXTERNAL
SCANDINAVIAN CYLINDER

**ULTIMATE ACCESS TECHNOLOGIES
TO UNLOCK YOUR FREEDOM TO MOVE.®**





ISEO Serrature s.p.a.
Via San Girolamo, 13
25055 Pisogne BS, Italy
Tel. +39 0364 8821
iseo@iseo.com

000846.UK - 12/2023.

Non-contractual document. Subject to change. Images for illustrative purposes only.

iseo.com